

GHC hydraulic fork lift jack



Properties

- Load capacity on pawl 4000 kg
- Load capacity on head 5000 kg
- Double lifting heights
- Overload prevention
- 2 lifting speeds normal or fast; with or without load.

Norm:

- EN12100

Type	WLL P1 (Kg)	Dim. L x W x H (Kg)	Construction height (Kg)	Lifting height (mm)	Weight (kg)	ProductId
GHC-5	5000	680 x 210 x 415	65-425	414-724	47	4260030

GHB trestles

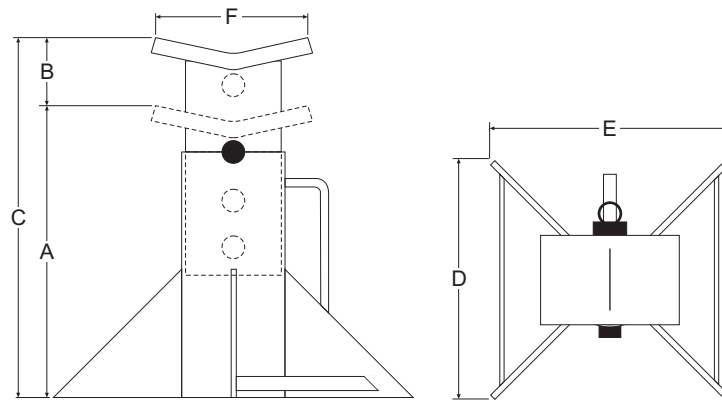


Properties

- Ideally combines with a hydraulic scissors jack
- Robust construction
- 3 height adjustments
- Available exclusively in pairs

Norm:

- EN12100



Type	WLL P1 (Kg)	A (Kg)	B (mm)	C (mm)	D (mm)	E (mm)	F (mm)	Weight (kg)	ProductId
GHB-6	12000/2	242	55	425	220	220	110	15	4261030